

### Description

The BP3122 is a high precision primary-side feedback and regulation controller for LED lighting, it operates in constant current control mode and is designed to work in inductor current discontinuous conduction mode and especially suitable for flyback convertor under universal input. The output power of system is recommended to less than 5W.

The BP3122 integrates 650V power MOSFET. Since adopting primary sense and feedback control technology, the secondary sense and feedback circuit is eliminated. The loop compensation components are also removed while maintaining stability overall operating conditions. It uses patent pending source driver architecture and demagnetization sensing technology, the operating current is very low, and it doesn't need the auxiliary winding for sensing the output current and supplying the chip. The low component counts and small system size are realized.

Since using the proprietary high accurate current sense method, the BP3122 realizes  $\pm 5\%$  accuracy of LED current along with excellent line and load regulation.

The BP3122 offers rich protection functions including LED open/short circuit protection, CS resistor short circuit protection, over-temperature protection,  $V_{CC}$  under voltage protection.

### Typical Application

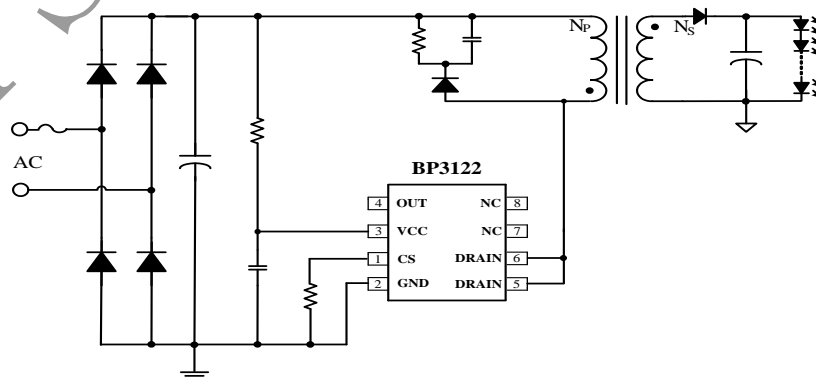


Figure 1. Typical application circuit for BP3122

### Features

- Built-in 650V Power MOSFET
- Constant current control without secondary sense and feedback circuit.
- No Auxiliary winding for sensing and supplying
- Ultra low operating current to improve efficiency
- Universal input voltage
- $\pm 5\%$  LED current accuracy
- LED short and open circuit protection
- CS resistor short circuit protection
- VCC under-voltage protection
- Over temperature protection
- Available in SOP-8 package

### Applications

- GU10/E27 LED bulb, spot light
- Other LED lighting

### Ordering Information

Part Number	Package	Operating Temperature	Package Method	Marking
BP3122	SOP8	-40°C to 105°C	Tape 2,500 Piece/Roll	BP3122 XXXXXY WXY

### Pin Configuration and Marking Information

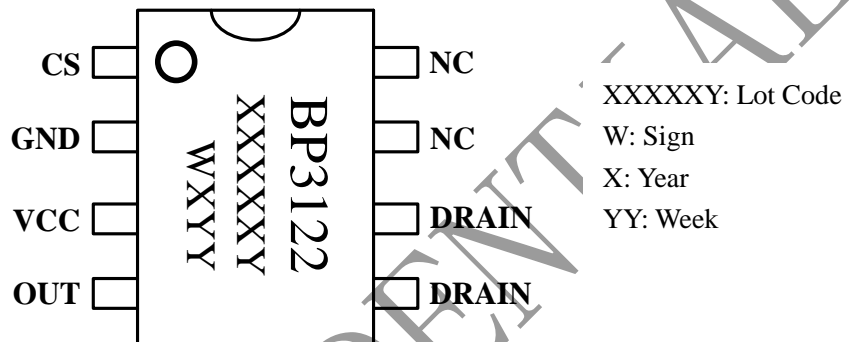


Figure 2. Pin configuration

### Pin Definition

Pin No.	Name	Description
1	CS	Current sense. This pin connects a current sense resistor to GND to detect the primary current of transformer.
2	GND	Ground
3	VCC	Power supply
4	OUT	Internal high voltage MOSFET Source
5,6	DRAIN	Internal high voltage MOSFET Drain
7,8	NC	No connection, must be floated

### Absolute Maximum Ratings (note1)

Symbol	Parameters	Range	Units
ICC_max	VCC pin maximum sink current	5	mA
DRAIN	Internal HV MOSFET drain voltage	-0.3~650	V
CS	Current sense pin input voltage	-0.3~6	V
OUT	Internal HV MOSFET Source voltage	-0.3~18	V
P <sub>DMAX</sub>	Power dissipation (note2)	0.45	W
θ <sub>JA</sub>	Thermal resistance (Junction to Ambient)	145	°C/W
T <sub>J</sub>	Operating junction temperature	-40 to 150	°C
T <sub>STG</sub>	Storage temperature range	-55 to 150	°C
	ESD (note3)	2	KV

**Note 1:** Stresses beyond those listed under “absolute maximum ratings” may cause permanent damage to the device. Under “recommended operating conditions” the device operation is assured, but some particular parameter may not be achieved. The electrical characteristics table defines the operation range of the device, the electrical characteristics is assured on DC and AC voltage by test program. For the parameters without minimum and maximum value in the EC table, the typical value defines the operation range, the accuracy is not guaranteed by spec.

**Note 2:** The maximum power dissipation decrease if temperature rise, it is decided by T<sub>JMAX</sub>, θ<sub>JA</sub>, and environment temperature (T<sub>A</sub>). The maximum power dissipation is the lower one between P<sub>DMAX</sub> = (T<sub>JMAX</sub> - T<sub>A</sub>)/θ<sub>JA</sub> and the number listed in the maximum table.

**Note 3:** Human Body mode, 100pF capacitor discharge on 1.5KΩ resistor

### Recommended Operation Conditions

Symbol	Parameter	Range	Unit
P <sub>OUT1</sub>	Output power (input voltage 230V ±15%)	<6	W
P <sub>OUT2</sub>	Output power (input voltage 85V~265V)	<5	W
F <sub>OP</sub>	System operating frequency	65~70	KHz



晶丰明源半导体

**BP3122**

**High Precision PSR Constant Current LED Driver**

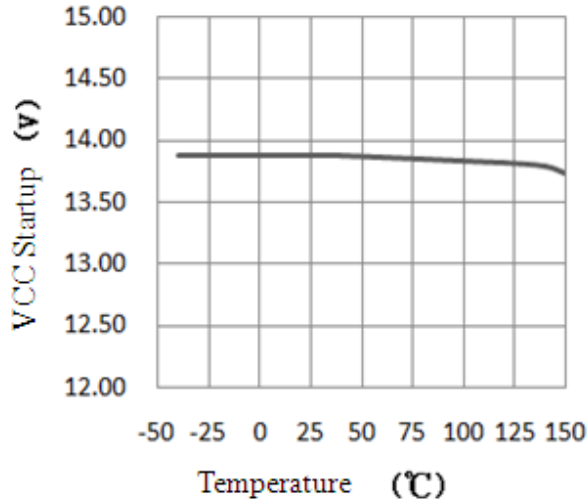
**Electrical Characteristics (Notes 4, 5) (Unless otherwise specified,  $V_{CC}=14V$  and  $T_A=25^\circ C$ )**

Symbol	Parameter	Conditions	Min.	Typ.	Max.	Units
<b>Supply Voltage Section</b>						
$V_{CC\_Clamp}$	$V_{CC}$ clamp voltage	1mA		15	17	V
$V_{CC\_ON}$	Turn on threshold voltage	$V_{CC}$ rising		13.8		V
$V_{CC\_UVLO}$	Turn off threshold voltage	$V_{CC}$ falling		9		V
$I_{ST}$	$V_{CC}$ startup current	$V_{CC}=V_{CC\_ON}-1V$		60	100	$\mu A$
$I_{OP}$	$V_{CC}$ operating current	$F_{OP}=70KHz$		150	250	$\mu A$
<b>Current Sense Section</b>						
$V_{CS\_TH}$	Threshold voltage for peak current limit		485	500	515	mV
$T_{LEB}$	Leading edge blanking time for current sense			500		ns
$T_{DELAY}$	Switch off delay time			200		ns
<b>Switching Frequency</b>						
$F_{MIN}$	Minimum working frequency			5		KHz
$F_{OVP}$	LED open circuit protection switching frequency			90		KHz
<b>Maximum Duty Cycle</b>						
$D_{MAX}$	Maximum duty cycle			42		%
<b>MOSFET Section</b>						
$R_{DS\_ON}$	Static drain-source on-resistance	$V_{GS}=14V/I_{DS}=0.5A$		15		$\Omega$
$BV_{DSS}$	Drain-source breakdown voltage	$V_{GS}=0V/I_{DS}=250\mu A$	650			V
$I_{DSS}$	Drain-source leakage current	$V_{GS}=0V/V_{DS}=650V$			10	$\mu A$
<b>Over Temperature Protection</b>						
$T_{SD}$	Thermal shutdown threshold			150		$^\circ C$
$T_{SD\_HYS}$	Thermal shutdown hysteresis			25		$^\circ C$

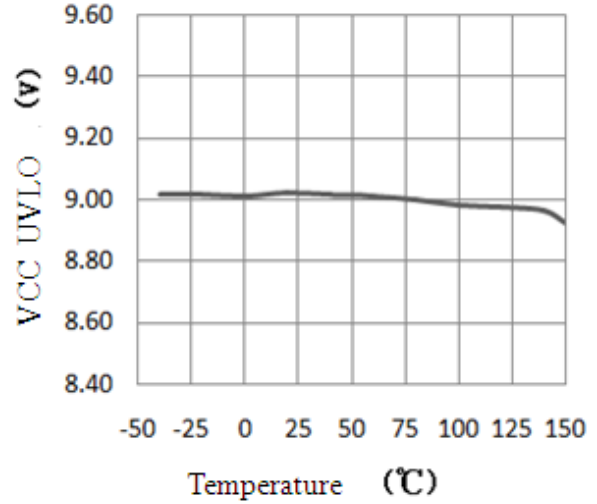
*Note 4: production testing of the chip is performed at 25 °C.*

*Note 5: the maximum and minimum parameters specified are guaranteed by test, the typical value are guaranteed by design, characterization and statistical analysis*

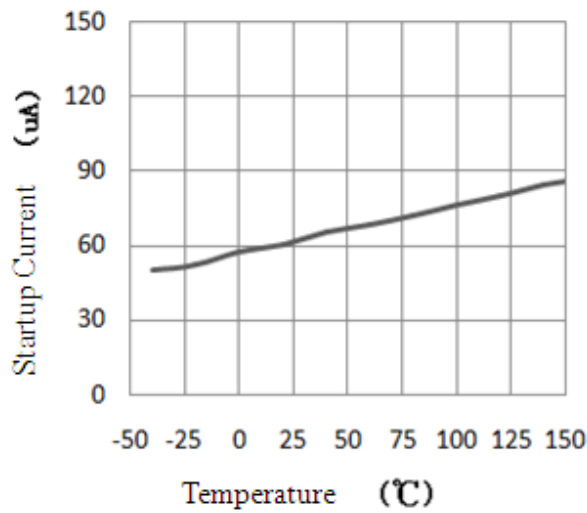
### Typical Performance Characteristics



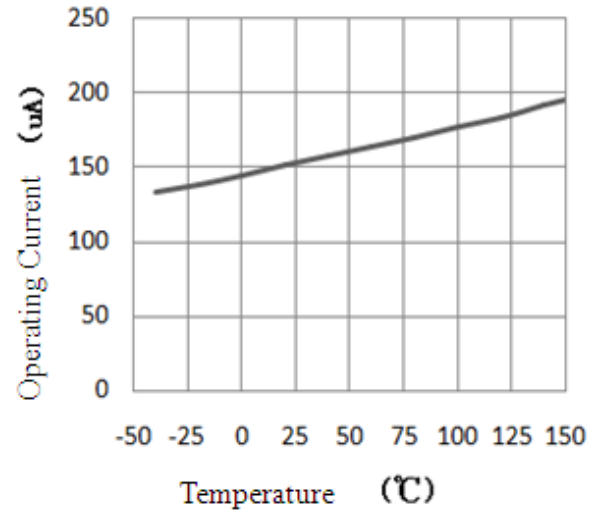
Turn on threshold VS. Temperature



Turn off threshold VS. Temperature



Start-up current VS. Temperature



Operation current VS. Temperature

### Internal Block Diagram

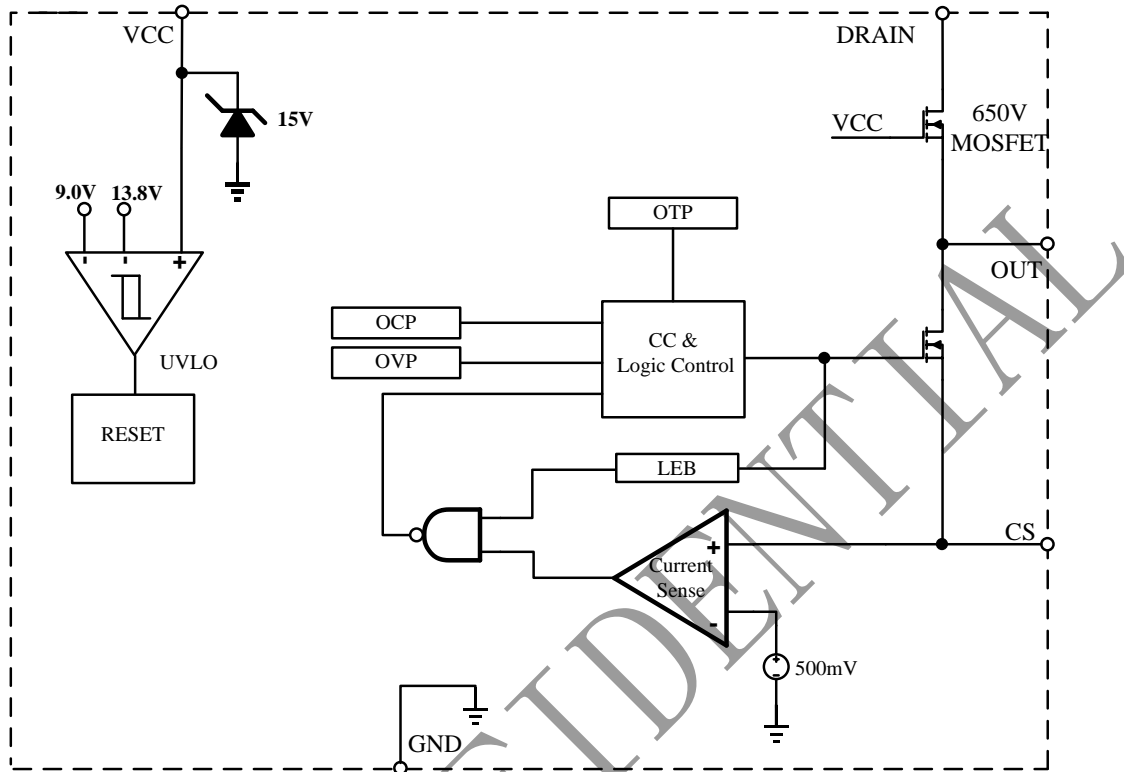


Figure 3. BP3122 Internal Block Diagram

### Function Description

The BP3122 is a high performance power switch specially designed for LED lighting, with patent constant current control technology. The BP3122 integrates a 650V power MOSFET. The accurate LED current can be realized without opto-coupler, TL431 feedback circuit and auxiliary winding while minimizing the external component count, lowering the total bill of material cost.

#### Start Up

The start-up current in BP3122 is designed to as low as 60uA. The V<sub>CC</sub> capacitor will be charged through the start-up resistor when the system is powered on. Once the V<sub>CC</sub> voltage reaches the start-up threshold, the BP3122 will start to switch. The BP3122 integrates a 15V zener for V<sub>CC</sub> clamping. Due to the ultra-low operating current, the auxiliary winding is not needed to supply the IC.

#### Constant Current Control

Cycle-by-Cycle current sense is adopted in BP3122, the CS is connected to the current sense comparator, and the voltage on CS will be compared with the internal 500mV reference voltage, the MOSFET will be switched off when the voltage on CS reaches the threshold. The output of the comparator includes a 500ns leading edge blanking time.

The primary peak current is given by:

$$I_{P\_PK} = \frac{500}{R_{CS}} (mA)$$

The current in LED can be calculated by the equation:

$$I_{OUT} = \frac{I_{P\_PK}}{4} \times \frac{N_P}{N_S}$$



晶丰明源半导体

# BP3122

## High Precision PSR Constant Current LED Driver

Where,

$N_P$ : primary winding turns of transformer

$N_S$ : secondary winding turns of transformer

$I_{P\_PK}$ : peak current in MOSFET

### Power MOSFET

The BP3122 integrates a 650V power N-MOSFET. It can minimize the external component count and reduce the BOM cost and PCB size.

The BP3122 uses SOP-8 package. The recommended system output power is below 5W in universal input (85Vac~265Vac) application.

### Operating Switching Frequency

The BP3122 is designed to work in discontinuous conduction mode and no external loop compensation component is required while maintaining stability. The maximum duty cycle is limited to 42%. The maximum switching frequency at normal operation is suggested to set around 65KHz~70KHz. If the maximum frequency is set too high, it will affect the number of maximum series LED lamps. If set too low, the LED open circuit voltage will be too high.

The maximum and minimum switching frequency is limited in BP3122 to ensure the stability of system.

The switching frequency can be set by the formula:

$$f = \frac{N_P^2 \times V_{LED}}{8 \times N_S^2 \times L_P \times I_{LED}}$$

Where,  $L_P$  is the primary winding inductance of transformer.

### Protection Function

The BP3122 has integrated rich protection functions, LED open/short protection, CS resistor short circuit protection,  $V_{CC}$  under voltage protection, over temperature protection, and so on. When the LED is open circuit, it will trigger over-voltage protection logic and latch, the system stops switching immediately.

When the LED short circuit is detected, the system

works at low frequency (Fop=5KHz), so the power consumption is low. At some catastrophic fault condition, such as shorted CS resistor or flyback transformer saturation, the internal fast fault detection circuit will trigger and latch, the system stops switching immediately.

After the system enters into fault latch condition, the  $V_{CC}$  voltage will fall until it reaches UVLO threshold. Then the system will re-start again. If the fault condition is removed, the system will recover to normal operation.

The thermal shutdown circuitry in the BP3122 senses the die temperature after start up, and the thermal protection threshold is set to 150°C with a 25°C hysteresis. When the temperature on die of BP3122 rises and reaches the threshold, the power MOSFET will be shut down immediately and maintained switch off until the temperature on die falls 25°C from thermal protection trigger point.

### PCB Layout

The following rules should be followed in BP3122 PCB layout:

#### Bypass Capacitor

The bypass capacitor on  $V_{CC}$  should be as close as possible to the  $V_{CC}$  pin and GND pin.

#### Ground Path

The power ground path for current sense should be short, and the power ground path should be separated from small signal ground path before the negative of the bulk capacitor.

#### The Area of Power Loop

The area of main current loop should be as small as possible to reduce EMI radiation, such as the primary current loop, the snubber circuit and the secondary rectifying loop.

#### NC Pin

The NC pin must be left floating to satisfy the requirement of creepage distance.



晶丰明源半导体

**BP3122**

**High Precision PSR Constant Current LED Driver**

---

Drain pin

To increase the copper area of drain for thermal consideration.

BPS CONFIDENTIAL



### Physical Dimensions

